

Temple Emanuel

of the Merrimack Valley

The Bulletin

Volume 64 Number 6

February 2016 – Shevat ~ Adar I 5776

*From the
Rabbi...*

Kernels of Kindness



Growing up in New York City and living as a young adult in Boston I enjoyed the daily miracle of public transportation and didn't bother to acquire a driver's license until I was 24. Soon afterward I purchased my first car, and enjoyed the incredible convenience of wheels. No longer did I have to shlep endless blocks to far-flung and hard-to-reach destinations, nor spend an hour getting to locations that were just a few miles, but many transfers, away. What joy! On the other hand, when the winter set in, it was a treat to leave my car buried in snow banks for weeks at a time because I *could* continue to take the T to get around.

My first winter living and working in suburbia, I was astonished by the cultural difference of T-riders versus commuters. I recalled many winter evening rush hours in Boston, where riders laden with holiday gifts rode shoulder-to-shoulder with nine-to-fivers making their way home. I noted how people would squeeze themselves in to make room for others, and offer a hand up the steps, or a seat, or hold the doors of the train so one more could get on. Of course there were grumpy people as well, but, overall, there was a sense of "we're all in this together" camaraderie. In my affluent suburb, I noted a pervasive feeling of isolation and self-centeredness. On errands at the mall, I witnessed shoppers abusing sales staff, people annoyed by the very young or elderly who failed to move quickly enough out of their way, and people nearly coming to blows over parking spaces.

What was going on here? Where were the kernels of kindness I'd observed in the city? I believe the root cause of this behavior was a lost sense of humanity. As we scurried

about encased in our comfy cars we no longer had to look our fellows in the eye, nor stand pressed against them in a crowded, overheated subway car, and in being so physically cut off from others, our selfishness was allowed to bubble up and overtake us.

For me, this was a formative experience, one that continues to influence my behavior towards strangers. We all have moments when we feel our needs trump others' and we fail to extend the kindness and courtesy we have within us. But there is nothing more valuable than offering, or receiving, a gesture or word of kindness.

On a recent a grocery trip with my kids, we laughed and joked our way through the aisles, until, near the end of our trip, one of them had a bit of a meltdown. I'm not proud of my response, which lacked sufficient empathy or patience. But I received solace in a few sentences offered, unsolicited, by another mom whose shopping trip had closely followed ours. She commented on the love that was evident in our earlier interaction, and offered me words of encouragement through the difficult moment we were then experiencing. A tiny thing, but it made all the difference in how the rest of the evening played out for us.

A week ago, chatting with congregants on a Sunday before and after a class, I said to a number of people, "I'm so glad you're here." Each time, it was clear the hearer appreciated the comment. About the 5th time I said it, I realized it could be perceived as disingenuous – but each time it had been a spontaneous part of a longer sentence, and I'd been sincere in my appreciation, for widely different reasons, for each person. Reflecting on it later that evening, I realized the remark had been a needed validation for a couple people to whom I'd spoken, and I was struck by the impact my small and genuine comment might have had.

We have the opportunity to perform *tikkun olam*, repair of the world, every day with our words and actions. May each of us, every day, look into the eyes of our fellows and endeavor to extend the kind word and the helpful deed.

L'shalom,
-Rabbi Robin S. Sparr

February 2016 Service Schedule

Date	Notes/Hosts	Yahrzeiten
Friday, February 5 <i>Parashat Mishpatim</i> 7:30 PM Shabbat Service	Board: Stephanie Karakantas Oneg: Jane Maine and Vivian Burton	George Gerzon 1/30 Harry Joslin 1/30 Kenneth David Miller 2/1 Jeffrey G. Nanis 2/4 Roslyn "Rookie" Taber 2/5
Friday, February 12 <i>Parashat Terumah</i> 7:30 PM Shabbat Service	Lay leader: Rachel Rand Board: Michelle Vlamis Oneg: Harriet & Richard Snyder	Leon Kahn 2/6 Marika Karakantas 2/9
Friday, February 19 <i>Parashat Tetzaveh</i> 7:30 PM Shabbat Service	Board: Stephanie Karakantas Oneg: Debra Sosin & Warren Schwartz	Hyman Kahan 2/13 Bertha Bishov 2/16 Raphael Miller 2/19 Joseph Rooks 2/19
Friday, February 26 <i>Parashat Ki Tisa</i> 7:30 PM Shabbat Service	Board: Kerri Sheingold Oneg: Marilyn Gallant	Miriam Moser 2/21 AnnaMargaret Voss 2/22 Dan Miller 2/23
Sunday, February 28 <i>Parashat Vayakhel</i> 10:50 AM Weekday Service	<i>Religious school morning tefilah (prayer service) All are welcome!</i>	
Friday, March 4 <i>Parashat Vayakhel Shabbat Shekalim</i> 7:30 PM Shabbat Service	Board: Richard Ebner Oneg: Laurie Joslin	Elinor "Lynn" Diamond 2/27 Gertrude Gerzon 2/27 Herbert Diamond 3/3 Morton Abt 3/4 Ethel Snyder 3/4

PRESIDENTS' MESSAGE

It was a first for our board of trustees' executive session meeting last month. To show you how dedicated your trustees are—picture this: in order to ensure a quorum, we had 2 board members call in, while another texted in until he could arrive to seal the vote. And why was this particular executive session so crucial? In accordance with our long standing practice not to charge for High Holy Day seats, we wished to extend this sentiment even further in how we structure our annual dues. There has been discussion for some time, within the board this year, regarding changing our current dues structure to a non-dues, pledge system, called, “**choose your dues**”. In recent years, an increasing number of congregations are rejecting the old model of fixed dues to introducing new systems that include a voluntary dues structure. What has triggered this rethinking?

The URJ has suggested this as one method to remove a barrier to joining a synagogue. Discussions I and other board members have had with potential members ultimately end up with the question, “well how much does it cost?”. It is difficult when someone wishes to be part of a spiritual community but feels that financially they cannot be part of it. Under the new voluntary structure, those who are experiencing financial hardship can still join or remain members of the community, without feeling the need to explain why they can only pay “so much”.

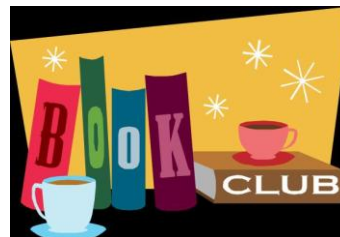
Having been a member of a community outside of TEMV some time ago, I recall a time when I could not pay the amount of dues I was expected to pay. After several phone calls and a conversation with the treasurer explaining my financial situation, not only did I feel embarrassed but was told that I would have to pay an amount that was beyond my ability to pay. Thankfully, this is not a practice of TEMV and although our treasurer is approachable and friendly, as trustees we do not want any temple member or prospective member to feel uncomfortable or uneasy about a potential financial hardship.

Underscoring all of this, it is important to say that we cannot exist as a community if we all decide not to contribute our fair share. “**Choose your dues**” means just that—whatever you feel you can contribute; your rightful share is what we ask you to consider. If we relied solely on dues, it would mean that each household would pay \$2019.23 per year to keep the temple running. Of course, no one expects everyone to give that amount—as a matter of fact—some of us can, some of us can't and others can give more. The experience of many temples that have adopted this voluntary method, have seen

an increase in membership and an increase in revenue. The TEMV board is willing to give the, “**choose your dues**” structure a try for fiscal year 2016-2017 and would like you to vote in favor of this change at our board meeting on March 9th. All members should keep an eye on their mail for a letter from the board inviting you to vote or send in a proxy to change our bylaws accordingly to support a voluntary dues structure. Please send any questions or thoughts to president@temv.org.

Aligning our dues structure with our values of audacious hospitality, acceptance, fairness and compassion makes sense. It only further strengthens our community for the future and it is yet another step in fulfilling our mission of being open to all.

B'shalom,
Stephanie



TEMV Book Club

Upcoming Meetings and
Good Reads!

The TEMV bookclub met on January 17th and discussed the book “Girl on the Train” by Paula Bowers. We also suggested many new titles for the upcoming months:

February 21 10 AM Orphan Train by Christina Baker Kline— Home of Phebe Rand

April 10th 1 PM Portnoy's Complaint by Marcel Proust— Home of Rachel Rand

June 5th 11 AM The Secret Chord by Geraldine Brooks— at the Temple

July 17th 11AM A Brief History of Seven Killings by Marlon James-Stephanie Karakantas' home

September date TBA-The Finkler Question by Howard Jacobson

Please come along to any meeting—all are welcome!
Contact bookclub@temv.org for addresses and more information.

Religious School News

Our students continue to be engaged in a variety of learning and programming experiences, and we're looking forward to exciting programs coming up!

Personalized Prayerbooks Reminder: This year, all religious school students who have mastered the Hebrew alphabet and begun reading Hebrew will receive a personalized siddur (prayerbook) at a special ceremony honoring their accomplishment.

Please save the date: **April 1st, 6:00pm** dinner followed by our Siyum HaSefer service, and see the flyer elsewhere in the bulletin for the book order form. If you haven't yet returned the flyer to me, please do so immediately so that we can order a book for your child!

Hadashot: If you have news or information to share, feel free to send it to me for inclusion in our weekly newsletter.

COMING UP THIS MONTH:

Sunday, February 7: School in session; Torah Tots at 10:30 – invite your friends with young children (under age 7)

Sunday, February 14, and February 21: NO SCHOOL; February Vacation Week

Sunday, February 28: School in session; 10:50 am Sunday Tefilah (morning prayer service) - All are welcome!

SAVE THE DATE:

Friday, March 11: Tot Shabbat and community dinner – Service for young families (children under age 7) at 6:00pm, followed by community dinner at 6:30 and Shabbat service at 7:30

Sunday, March 13 – Mitzvah Day In addition to our regular school day, we will have a short program and then deliver meals to those in need in our community. More details soon!

Friday, March 25: Purim service and celebration, including reading of the Megillah

Sunday, March 27: Purim celebration continues during religious school with abridged Megillah reading, songs, and costume parade!

L'shalom,
Rabbi Robin S. Sparr
Director of Education

CONTINUING EDUCATION

Taste of Mussar is completely full, with 20 participants! Classes continue for two more weeks this month, February 7 and 28, with a make-up (snow day) on March 6.

COMING UP:

I will be offering a **Taste of Cantillation**, open to all. The class will introduce the basic concepts of trope, the special notation system for chanting Torah (and other scriptural texts). Participants should have some basic Hebrew reading skills, but there is no need to read quickly. Class will meet during religious school on the following Sundays:

February 28

March 6

March 27

April 10

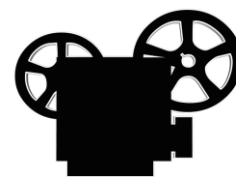
Meeting times may vary to accommodate existing religious school programming. If you wish to join this class, kindly contact me at temvrabbi@gmail.com to reserve your spot and to ensure that you will receive notifications about class meeting times. All are welcome; an \$18 fee for non-members; \$18 donation is suggested for members but not required.

L'shalom,
Rabbi Robin S. Sparr

Movie Outing

Sun Feb 21 around 1:30
pm

Want to go to a movie
with your temple friends?



We will choose the movie closer to the date – but we'll aim for a movie around 1:30 either in Tyngsboro or Lowell. Movie will be chosen by a consensus of those who have expressed an interest by contacting movie@temv.org

Musical Tapestry and Fundraising Night Saturday, March 12 2016

Consider supporting TEMV with either a personal donation to the Fundraising Night or by volunteering to solicit merchants and businesses for a donation.

The success of an auction relies first and foremost on donations, not promises of donations. So, before you forget, contact



events@temv.org and let us know what you wish to donate. Can't decide we'll be happy to provide suggestions. Then drop off or mail it to the temple. Gift certificates, tickets, professional services, hand crafted items are just a few of the endless possibilities. The donations need not be expensive. Perhaps you have a brand new item you received as a gift that you really can't use? We won't tell!

In recent years many of our donations have been from local merchants and businesses. They are willing to donate but they have to be asked. In return for their donation we encourage the TEMV community to patronize businesses that support us and include them on the donor page of our website <http://www.temv.org/donors/>.

This is the Temple's only major fundraiser of the year, and its success depends on your participation.



Featured musical acts are
The Chameleons
Rabbi Robin Sparr and
Rahel and friends

There are openings for select Temple acts, if you are interested in performing please contact events@temv.org for prior approval.

Thank you in advance for your support

Wandering Ivy

Hana, Mini (our dog) and I just got back from a week in the Vysoke Tatry (High Tatra Mountains) in Slovakia. It was the first time I'd been there, even though it was a favorite vacation spot of Hana's family for most of her life. Both her mother, Helda, and grandmother, Hermina, belong to the Czech writers union. The union had a vacation house there years ago, so they and Hana used to go quite often. In addition, Hermina cured herself of tuberculosis in the fresh mountain air at one of their many health and wellness facilities.

For Hana, Hermina and Helda, every corner of the area had a story attached to it. As we explored the waterfalls (hidden behind layers of ice) and snowy paths, sledged down the longest sled run in Europe and took cable cars to high up places, Hana told many stories. We partook in a few family traditions - pie for lunch at Grand Hotel Praha, walks between one town and the next and more. We also created some of our own - a waterfall walk and cable car rides.

When we returned, we shared our new memories with Helda and Hermina who added their memories and stories about that place. Each of them remembered something slightly different. They playfully argued with each other over who was correct and laughed endlessly and hard at some of our adventures.

Our trip to Slovakia was greatly enriched through the memories and stories of Hana's family. In fact, without them, I think it wouldn't have felt like such a privilege to be there. Now, there are new stories to add. The tradition continues.

In some ways, our journeys and the journeys of countless generations of Jews before us mirror this connection to place, ancestors and memories. In fact, story-telling and experiences of place birthed Judaism as well as enriched, enlivened and encouraged Jews for generations. We too have our stories to add about our places and our experiences which not only enriches our lives and our community, but also Judaism as a whole. In my opinion, this is a privilege too.

Missing you all greatly,

Ivy

New Machzor for the Days of Awe



Thanks to everyone who donated to the fund for the newly updated Machzor (High Holy Day Prayerbook). We only need 30 of the two-volume sets to reach our goal. Consider donating a set or more for your personal use or for the temple. You may use the form below to order

Name _____

I would like to order a total of ___ set (s) of the Mishkan Hanefesh Machzor for the Days of Awe at \$42 per set.

I would like ___ set (s) for my personal library.

I would like to donate ___ set (s) to TEMV.

Enclosed is a check for \$ ____.

(Checks should be made payable to Temple Emanuel of the Merrimack Valley – with *Payerbook Fund* in the memo

Treasurer
 TEMV
 101 W. Forest St.
 Lowell, MA 01851

Join Us for Lunch

Wed, Feb 24 at 11:30

Feng Shui Restaurant

285 Chelmsford St.
 Chelmsford, MA

<http://www.fengshuichelmsford.com/>

Fine Chinese cuisine. Buffet and extensive menu.

RSVP to lunchbunch@temv.org

To be notified of last minute changes in date, venue or cancellation and to receive reminder emails, automatically join the lunch bunch email list by sending a blank email to lunch-bunch-join@temv.org



SIDDUR (PRAYERBOOK) ORDER FORM

Each student presently enrolled in grade 3, 4, 5, 6, or 7 will receive a personalized, gold-embossed, siddur at our Siyyum HaSefer service on April 1, 2016. Please complete and return this form to the school office/Phebe Rand at your soonest convenience to be sure we have the correct spelling of your child's name.

Note that the siddurim given to the students will have Hebrew and English texts, but NOT transliteration (Hebrew words rendered in Latin/English letters). If you wish to order an additional embossed siddur for your family, you must indicate if you want your household siddur to contain transliteration (*recommended*) or not.

Information about your child:

Name as you wish it to appear on the cover:

Hebrew name (will appear on a bookplate inside):

If you wish to order additional books for your family:

The cost per book is \$45; please include your check with this form.

Number of books you wish to order:

WITH Transliteration: _____

WITHOUT transliteration: ____

Name as you wish it to appear on the cover (can be an individual's name(s) or family name):

If you wish to order additional books to be donated to the Temple:

The cost per book is \$38; please include your check with this form.

Number of books you wish to order: _____

Social Action Update

Coming Soon

Mitzvah Day

This will happen Sunday, March 13th and is open for all Temple members.

If you have not participated before, this is your opportunity to experience the excitement.

Prior to March 13th we will make greeting cards which we will take with us that day.

We will meet at the Temple around 11:00 am for an education and training session. At 12:00 pm we will have lunch and go to the Mobile Food Pantry.

We will be organized in small groups (usually via family) and deliver food and our cards to homebound people.

If you are over 18 you should complete a CORI form. There is a copy of the CORI form in this issue of the Bulletin. Pass on your completed copy to me.

Lunch Assemblies

The next two assemblies will take place on Sundays March 20th and May 1st at 9:00 AM. Note: This is an earlier time. Please plan accordingly. Otherwise, everything else will be the same.

Purim/Passover Food Collection

Beginning with Purim we will have our collection of non-perishable food for people and their pets.

You can bring in food now as the box is in the lobby.

What We Have Done

Lunch Assembly on Sunday, January 10, 2016

We packed 243 lunches which were delivered to the Lowell Transitional Living Center (LTLC).

Well done!! Members from the entire Temple community participated.

Social Action Sabbath

Chris Hunt from Community Teamwork (CTI)

Lowell's anti-poverty agency, talked about "inequality", especially among children and families. He had lots of information and suggested some action steps for Temple community members.

Winter Clothing Collection

We have collected many coats, gloves and scarves for our winter clothing collection. There are also some scarves and hats made by Temple members.

All of that clothing will be sent to CTI.

Thank you all.
Frank

Ritual Committee update Is it spring yet?

Although it's still winter, the ritual committee has its eyes on March and April holidays. We continue to meet every other month with Rabbi Robin and plan the services and events before and after services between now and then. We are working to create a "format" or "template" of required prayers for those who lead services when Rabbi Robin is away.

In response to your feedback, this year's Purim service on March 25th will include some readings from the Megillah. We have also begun talking about our community Seder on Saturday April 23rd. Events such as these offer opportunities for many to be involved. A Seder for 15 at your home is a good deal of work. A Seder for 50 at the temple offers an abundance of opportunities for folks to be involved in a Seder without "doing it all." Please begin to consider if you'd like to help with planning, go shopping for Seder plates, help set up the room and set tables, or clean up.

Our next ritual meeting is February 1st at 7pm at TEMV. All members are welcome to attend. You are also welcome to call me to talk about what we do and how you could be involved.

Karen Lipshires
ritualchair@temv.org
617-312-0393

**CRIMINAL OFFENDER RECORD INFORMATION (CORI)
ACKNOWLEDGEMENT FORM**

TO BE USED BY ORGANIZATIONS CONDUCTING CORI CHECKS FOR EMPLOYMENT, VOLUNTEER,
SUBCONTRACTOR, LICENSING, AND HOUSING PURPOSES.

is registered under the provisions of M.G.L. c. 6, § 172 to receive CORI for the purpose of screening current and otherwise qualified prospective employees, subcontractors, volunteers, license applicants, current licensees, and applicants for the rental or lease of housing.

As a prospective or current employee, subcontractor, volunteer, license applicant, current licensee, or applicant for the rental or lease of housing, I understand that a CORI check will be submitted for my personal information to the DCJIS. I hereby acknowledge and provide permission to submit a CORI check for my information to the DCJIS. This authorization is valid for one year from the date of my signature. I may withdraw this authorization at any time by providing written notice of my intent to withdraw consent to a CORI check.

FOR EMPLOYMENT, VOLUNTEER, AND LICENSING PURPOSES ONLY:

the _____ may conduct subsequent CORI checks within one year of the date this Form was signed by me provided, however, that must first provide me with written notice of this check.

By signing below, I provide my consent to a CORI check and acknowledge that the information provided on Page 2 of this Acknowledgement Form is true and accurate.

SIGNATURE

DATE

TEMV YOGA



TEMV yoga meets twice a week. Wed. 6:45 – 8:00 pm and **Gentle Yoga, Mondays, at a new time, 11:15 am.** Everyone is welcome to join either class on a drop in basis. All levels welcome. The Monday morning class is a great way to start the week with long deep

stretches.

Cost \$7 for the instructor and a \$3 donation to the temple. Wear comfortable clothes and bring a mat.

For more information, contact Phebe at (978) 256-2855 or email the instructor, Cornelia Dinca, at yogainfo@temv.org.

For cancellations and last minute changes it is recommended that you join the email list by sending a blank email to yoga-join@temv.org

Mah Jong

Tuesdays 6 PM & Thursdays 1 PM

Send a blank email mahjongg-join@temv.org to join the email list.



Wesometimes cancel at the last minute and we want to let everyone know. Send us an email or give us call to let us know you plan on being there. Spread the word; bring your friends and neighbors!

\$2 Temple donation appreciated.

Contact: mahjong@temv.org or Shirley 978 851-4724 or Phebe 978 256-2855

Happening at TEMV Weekly Email Blast

Watch your Inbox for the Happening this week at TEMV Email Blast

Please watch your email inbox for a reminder of everything happening at TEMV for the week. Since the end of September a weekly blast with all activities and reminders for the week has been sent to the community email list. If you haven't been receiving these important reminders, check your spam folder. To join the distribution list automatically – address an email to: community-join@temv.org .

The email includes Rabbi Sparr's office hours for the week, committee meetings, special announcements, Shabbat Services updates and reminders. Send feedback and suggestions to publicity@temv.org

GLILA Event and Service about Refugees

Sunday April 3rd the Greater Lowell Interfaith Leadership Alliance (GLILA) will have a service about the current plight of refugees, particularly in the Lowell area.

For a number of years GLILA has had a service in the Spring about Genocide. Recently it was agreed to focus on violence. Since many refugees are fleeing violence and many have settled in the Lowell area it seemed appropriate for refugees to be the focus this year.

It will include an educational period from 3:00 to 4:00 PM and will be followed by an interfaith service from 4:00 to about 5:00 PM. There will also be a light supper and social action informational tables.

We expect to hear from refugees about their experiences in their countries of origin and also what services and support there is in greater Lowell.

Temple Emanuel has been an integral part of GLILA. Please hold April 3 on you calendar and we will send more specific information about the site and the schedule.

You may contact Frank at farfel43@yahoo.com with any questions.

Thank you,
Frank

To all Members – Important Vote

If you don't receive the letter about the change in dues vote from the Board of Trustees by February 10, please contact Stephanie at president@temv.org.

Highlands Neighborhood Council Meeting

Mon, Feb 8 7 PM Monthly meeting of the Highland Neighborhood Council. Meetings are the second Monday of the month. All residents of the Highland Council are invited.

**Modern Jewish Families – Jewish Family Relationships
in the Torah on February 6
With Guest Rabbinical Student Sam Blustin, Jewish
Theological Seminary**

Sam Blustin, a rabbinical student at the Jewish Theological Seminary in New York City, will be at Temple Beth Abraham for Shabbat on February 6. Come for services and lunch and see how donations to the Sisterhood Torah Fund support future Rabbis of the Conservative Movement.

Sam will address the congregation during services with a D'Var Torah on "The Power of Midrash in Difficult Stories". This will focus on the story of Cain and Abel as a way of looking at how the Rabbis deal with difficult texts and relationships in the Torah.

Then plan to stay for Lunch and Learn where Sam will lead a discussion on "The Impact of Home". During this presentation, we'll look at the relationship between biblical parents and their children. In addition, we'll discuss how the impact a parent has on their child has lessons for us in creating modern Jewish homes and young Jews that are passionate about their Judaism.

This should be a delicious, informative, and fun Shabbat celebration. Sponsored by TBA Sisterhood and the Lifelong Learning Committee.

Shabbat morning services at 9:30 am followed by Kiddish luncheon.
Temple Beth Abraham, 4 Raymond St, Nashua, NH 03064;
(603) 883-8184; www.tbanashua.org

TEMV Trivia

So it's winter and it's cold, but it could be worse. In 1994 Lowell hit a modern day record low of what temperature? Answer next month. Last months ans.

Sen. Joseph Lieberman

Pampered Chef Fundraiser

Thanks to everyone who participated in the Pampered Chef Fundraiser we raised about \$200 which covers one snowplowing.

**Caring for Our Parents
Legal Concerns and Financial Documents
With Attorney Bill Barry and Fiduciary Advisor Carl
Johnson
on Tuesday, February 9, at 6:30 PM**

This is the culminating program of the Caring for Parents series presented by the Lifelong Learning Committee of Temple Beth Abraham. Attorney Bill Barry and Fiduciary Advisor Carl Amos Johnson will be offering their expertise at an informative session.

- How do I get involved before a crisis? How do I respond if the crisis, such as a need for dependent living, happens before plans are in place?
- How do I get my fiercely independent parent to trust me as an advocate?
- Should my parent have a will, a trust, or neither? What should I know about probate?
- How do my siblings and I work out differences of opinions?
- How should accounts be titled?
- What documents does my parent need? How do I organize them?
- How will bills get paid if my parent is no longer able to pay them?
- What if the water heater in my parent's home breaks? Do I rent or purchase another one?
- What about plans for myself? How do I talk to my children?

Get answers to these and other questions on Tuesday, February 9, at 6:30 PM.
In case of snow, the session will be Thursday, February 11, at 6:30 PM.
Temple Beth Abraham, 4 Raymond St, Nashua, NH 03064;
(603) 883-8184; www.tbanashua.org.

**Donation to the TEMV Auction
Sat Mar 12**

Donor: _____

Donation _____

Description: _____

Estimated Value _____

Return to the temple by March 6 with your donation
Contact events@temv.org with questions.

Membership News

Congratulations to **Karen Lipshires** and **Cinde Claterbuck** on their engagement.

Congratulations to **Ivy Helman** and **Hanka Sowohlalsauch** on their recent engagement.

R'fu-ah Sh'leymah

“The renewal of body, the renewal of spirit..”

Jim Lipshires

Nancy Rovin - *delighted to say that her health has improved significantly.*

Phyllis Kalfus

Seth and Melissa Isaacs

May their memory be for a blessing

Jay Rothman, brother of Eugene Rothman, brother-in-law of Rabbi Robin Sparr, and uncle of Yael and Spencer Rothman, passed on Monday, January 11, at the age of 68 in Penrith, Australia.

Donations in memory of Jay Rothman may be sent to Mama Lana's Community Foundation, a homeless-support organization for which Mr. Rothman worked.

Jimmy Morrison, father of Joyce Morrison passed on Wednesday, January 20th.

Barbara Barrows, passed on December 27th at the age of 78. She was the mother of Alyse Crane and sister of long time member Norm Starr.

Recent Donations

We'd like to thank our December donors: Gary and Darlene Schnaper, Fay and Art Pizer, Barry and Elisabeth Lewin, Sam Litvin, Karen Lipshires and Marilyn Root.

And those who bought high holiday machzor for the temple: Stephanie Karakantas and Jane Maine.

There's still plenty of time to donate high holiday prayer books or to buy a set for yourself!. More information about the new machzor can be found on page 6 of the bulletin.

Bereavement Info

The Temple Emanuel community is available to assist members who experience the passing of a loved one. In addition to calling **Rabbi Sparr**, please notify **Karen Lipshires** (617 312-0393) or email caring@temv.org. We will respond to the needs of the individual members by notifying Temple members of the death, arranging for *Shiva*, or helping in any other way that we can be of service.

TEMV Donation Form

In times of joy and in times of sorrow, to mark a special occasion or to remember a loved one, it is a custom to give charity. Kindly consider TEMV when you wish to share your gratitude for the blessings of life, loved ones, and special moments

Name: _____

Phone: _____

Email: _____

Kindly accept my donation ____ in honor
____ in memory of: _____

Please apply my donation to the following fund:

____ General Fund

____ Education Fund

____ Rabbi's Discretionary Fund

____ Prayerbook

____ Social Action

____ Music

____ Youth Group

____ Library Fund

____ Hechel Loans Fund

____ Security / Safety (i.e defibrillator)

____ Accessibility Fund

Kindly send an acknowledgement of my donation to:

Name: _____

Address: _____

Contact the treasurer Alix Epstein at treasurer@temv.org
for information on any of the funds.

Hearts and Flowers Dance

February 13, 2016 8:00PM to 11:00 PM

Come and dance the night away with your sweetheart or friends. Enjoy classic rock music with a sampling of wines, hors d'oeuvres, and desserts.

Singles, couples and groups welcome



Featuring:

The Bar Chords

www.barchordsband.com

Live classic rock dance music from the 60's 70's and 80's

Tickets:

\$17 per person advance sales or \$20 at the door

Temple Emanuel, 101 West Forest St. Lowell, MA 01851
call (978)-454-1372 or email events@temv.org for
more information and advance ticket sales

It Takes a Community

Temple Emanuel is a buzz with activity, there's something going on at the temple almost every day. This spring there are many events and activities planned and for them to be successful we need volunteers, no job is too small, all help is appreciated. Don't know where to begin, read through the bulletin, you are sure to find something that sparks your interest. Everyone can participate at their own level. If you have a suggestion contact any board member. Below are just a few of the many ways you can help TEMV continue to thrive.

- Attend Shabbat or Tefilah Services
- Volunteer to host an Oneg
- Sign up for Taste of Mussar
- Attend committee or board meetings
- Take the garbage, recycling or compost home
- Offer to help maintain and upgrade the building
- Offer to help copy and mail the bulletin
- Write bulletin articles

Publicity – post fliers, post on websites, and write articles
publicity@temv.org

Lunch Bag Assemblies – donate to and help prepare lunches for the Lowell Transitional Living Center – next one is Sun Mar 20th at 9:00
frank@temv.org

Western Ave Studios – help find commissioned art for TEMV art gallery – contact president@temv.org

Hearts and Flowers Dance – Feb 13
Decorations, set up, clean up, preparing food
events@temv.org

Musical Tapestry and Auction – March 12
Auctioneer, Solicit donations, pick up donations, prepare food, set up, clean up, create baskets, donate to the auction events@temv.org

Open House – Sun Apr 3 – membership@temv.org

Second Night Pot Luck Seder – Sat, Apr 23
Set up, clean up, purchasing or preparing required items ritualchair@temv.org

Temple Contacts

If you need to speak to someone at the Temple, here are some important contact people. (Please limit calls to home numbers to between 10:00 am and 10:00 pm except in cases of emergency or prior arrangement.)

Rabbi Robin Sparr

Temple: 978-454-1372; Home: 508-736-5555
rabbi@temv.org

President

Stephanie Karakantas, president@temv.org

Director of Education

Rabbi Robin Sparr rabbi@temv.org

Ritual Committee

Karen Lipshires, ritualchair@temv.org,
617-312-0393

Caring Committee

Karen Lipshires, caring@temv.org , 617-312-0393

Education Committee

Sue Corneliussen, education@temv.org

Treasurer

Alexandra Epstein treasurer@temv.org ,

Social Action

Frank Baskin, farfel43@yahoo.com , 978 458-1512

Membership , Membership@temv.org

Programming

Shirley Papp, spapp7@gmail.com , 978-851-4724

Publicity

Phebe Rand, publicity@temv.org , 978-256-2855

Publicity Corner

TEMV is on Twitter! Follow us @TEMV_Lowell to stay on top of Temple happenings and items we share from the wider communities of which we are a part.

Don't forget to Like us on **Facebook**. Anyone can post comments and post to the temple's Facebook page. Your posts on the TEMV page helps boost our visibility.

Publicity volunteers needed to: Post fliers at our local supermarket, library, work, coffee shop. Post events on various websites, write articles for the local papers, take photographs at temple events, and brainstorm ideas. Send an email to publicity@temv.org or call Phebe at (978) 256-2855 if you are willing to help in any way.

Please patronize our sponsors, and tell them you "Read All About It" in the TEMV Bulletin...



PRINCETON
PROPERTIES

James Herscot, Chairman
Princeton Corporate Centre
1115 Westford Street, 4th floor
Lowell, MA 01851
Phone: 978-458-8700



Marlena A. Gilbert
Business Manager

47 Chelmsford Street
Chelmsford MA 01824
Tel: 978-256-7911
Fax: 978-256-6618

feeneytheflorist@gmail.com



Beth I. Gandelman
REALTOR®
Property Management Associate



Cell: (978) 239-6410
Bus: (978) 858-3500 Ext.307
Fax: (978) 858-0145
bgandelman@silva-associates.com
www.silva-associates.com
1215 Main St. • Unit 121 • Tewksbury, MA 01876

Covering Greater Lowell to Greater Newburyport areas.
10% of any commission from this ad or a referral will be donated to TEMV



Temple Emanuel
101 West Forest Street
Lowell, MA 01851

